



GEOFRAME
PROCESSED
INTERPRETATION

BestDT*

SonicVision Results

Run 1,2,3 335m - 2170m (1/500)

* A Mark of Schlumberger

Using the following logs: sonicVision

COMPANY: BEACH PETROLEUM
WELL: PEEJAY-1
FIELD: WILDCAT
RIG: WEST TRITON
STATE: TASMANIA
COUNTRY: AUSTRALIA
Well Location: BASS STRAIT
Date Processed: 28-Nov-2008
Elevations: KB: 34.15m GL: -78m
API Number: 08ASQ0031

FOLD HERE The well name, location and borehole reference data were furnished by the customer.

All interpretations are opinions based on inferences from electrical or other measurements and we cannot, and do not guarantee the accuracy or correctness of any interpretation, and we shall not, except in the case of gross or willful negligence on our part, be liable or responsible for any loss, costs, damages or expenses incurred or sustained by anyone resulting from any interpretations made by any of our officers, agents or employees. These interpretations are also subject to Clause 4 of our General Terms and Conditions as set out in our current Price Schedule.

Field Recording:	Location:	Software Version: 13X0-101	Engineer: MARGANDA
Office Recording:	ICS Center: Melbourne	Baseline: GF 4.4 DC2	Log Analyst: A. Datey
Mud and Borehole Measurements:			
Rm @ Measured Temperature:	@	BHT:	Bitsize:
Rmf @ Measured Temperature:	@	Type Fluid in Hole:	
Rmc @ Measured Temperature:	@	Mud Density:	

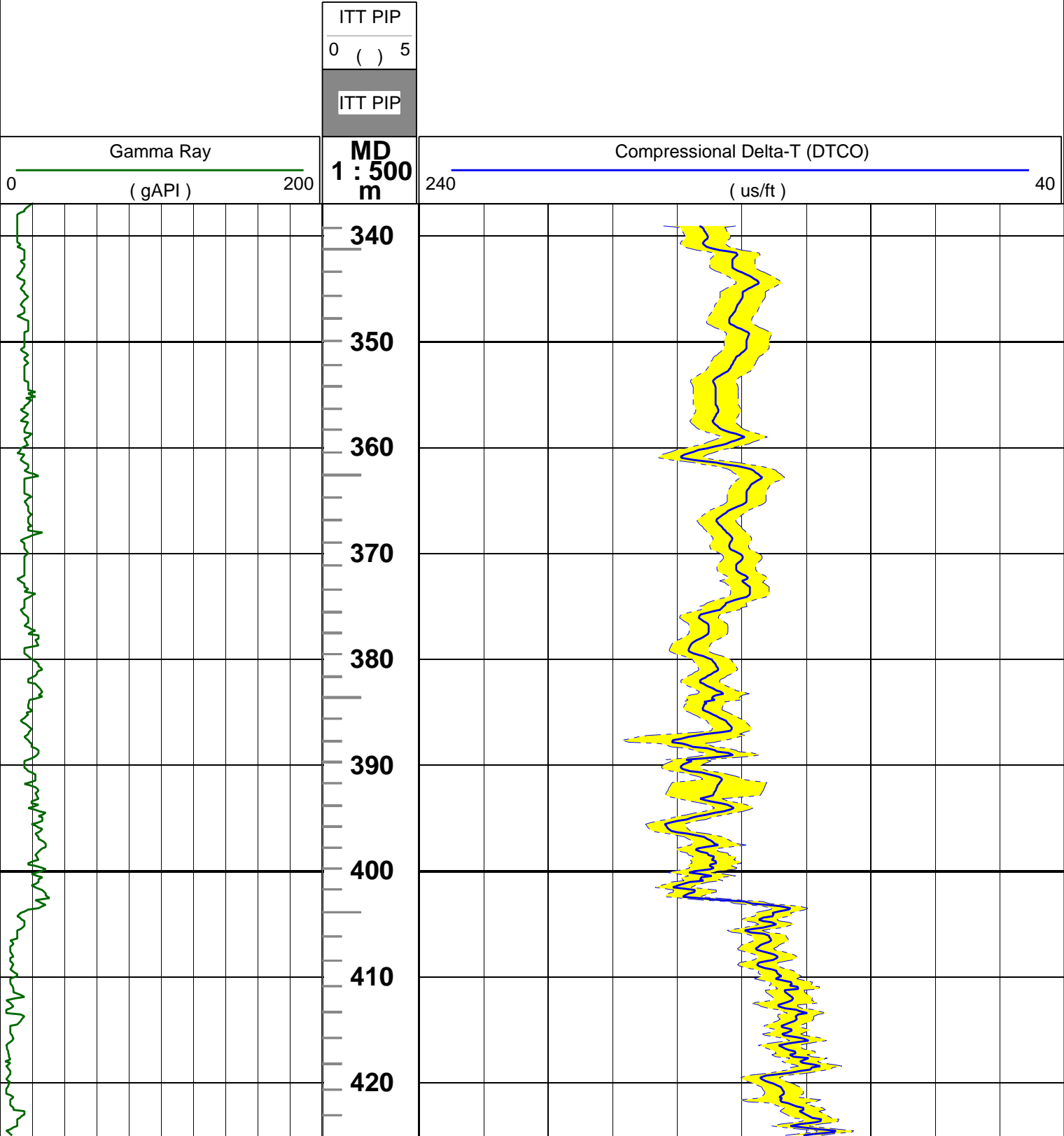
Remarks:

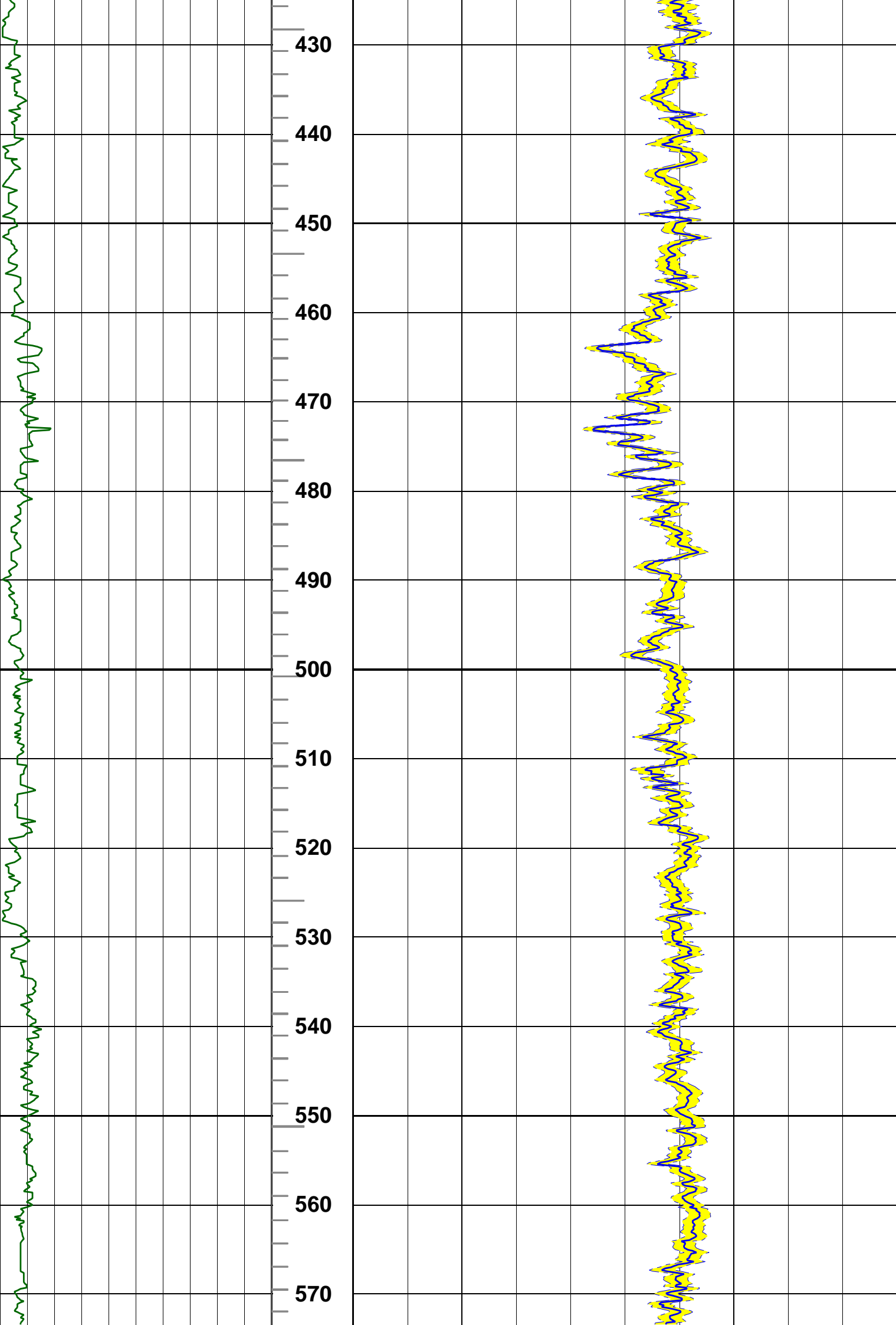
Log SPliced from :

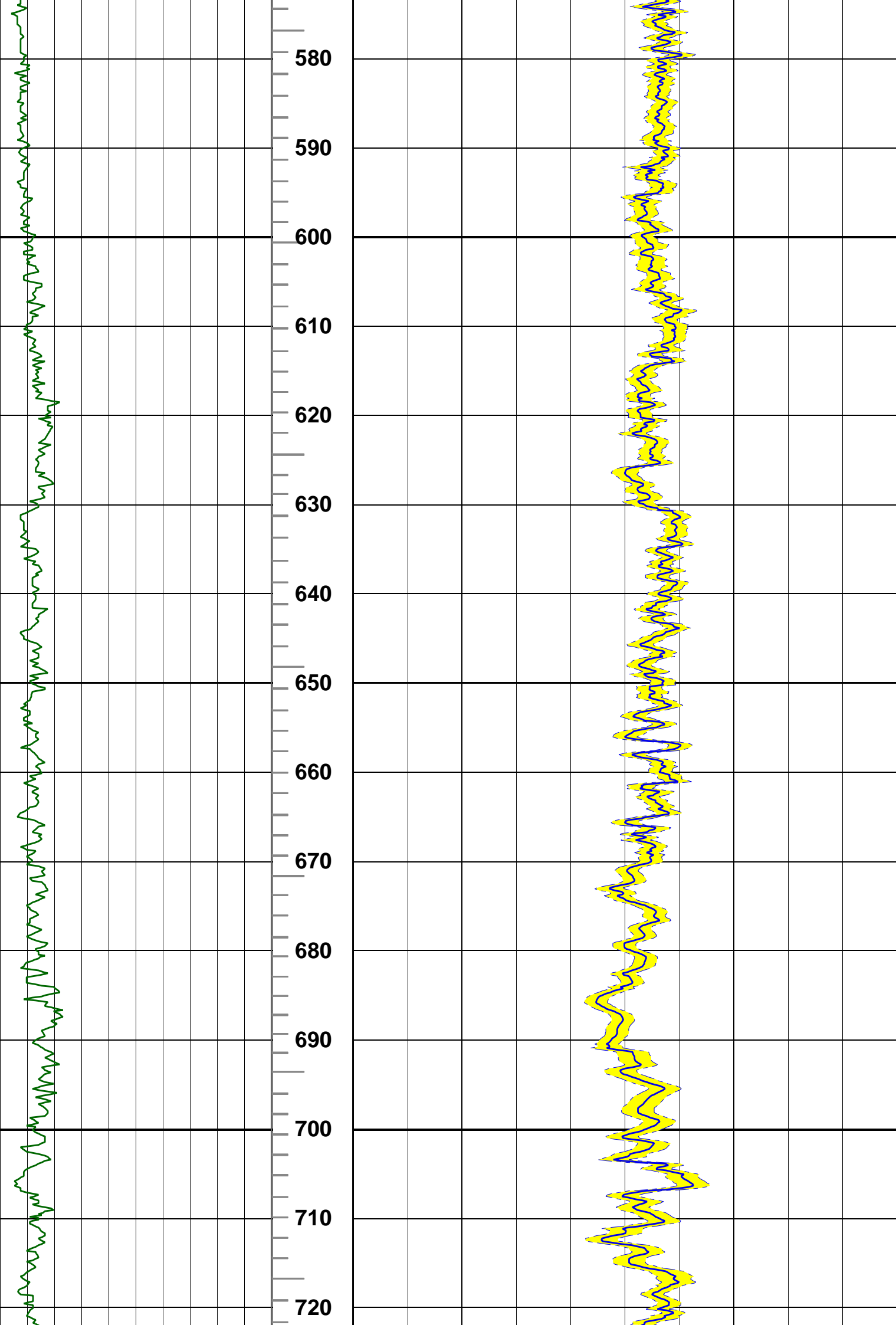
- Run 1 : 339m - 814m
- Run 2: 814m - 1434m
- Run 3: 1434m - 2167m

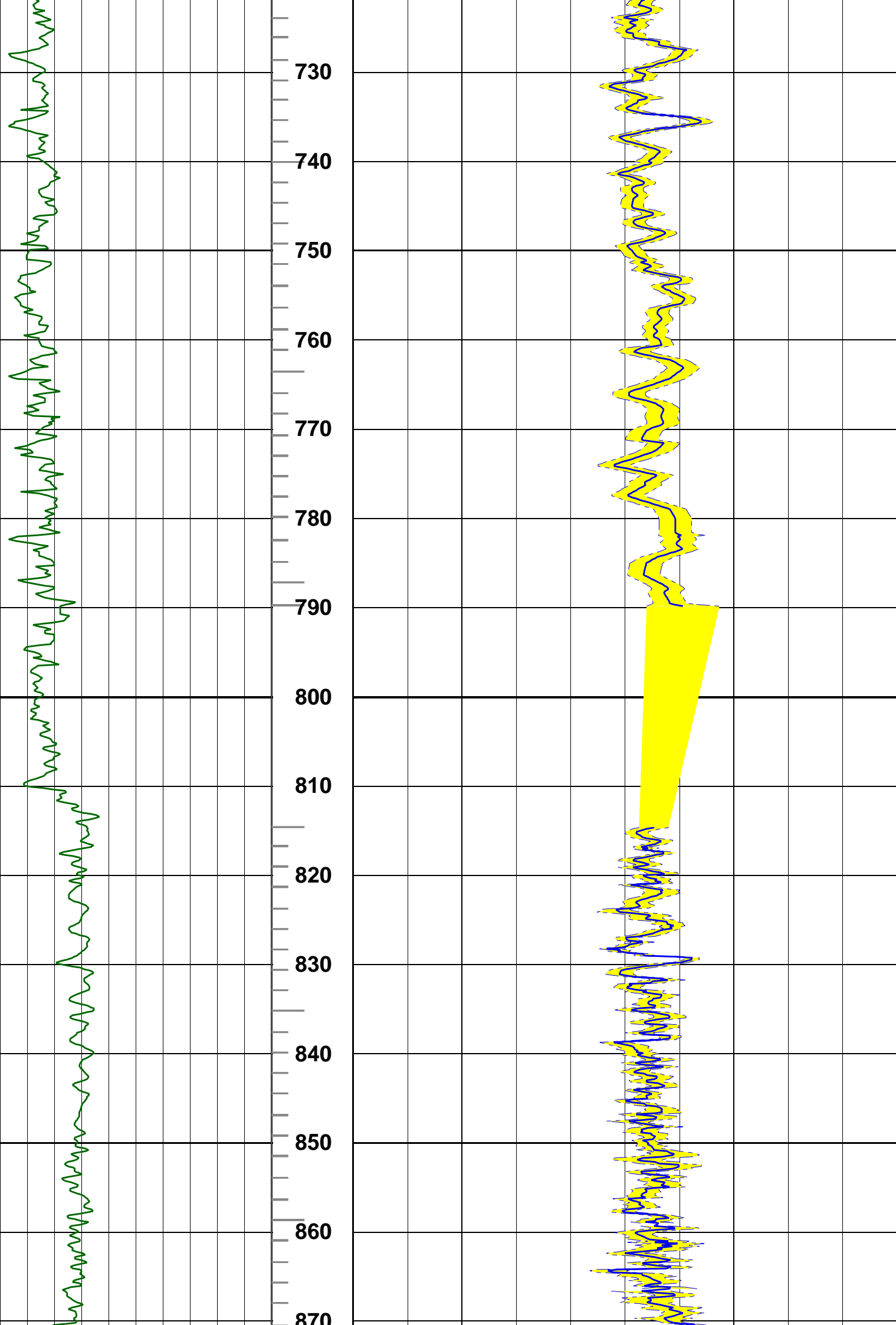
See each run PDS/PDF file for the QC log.

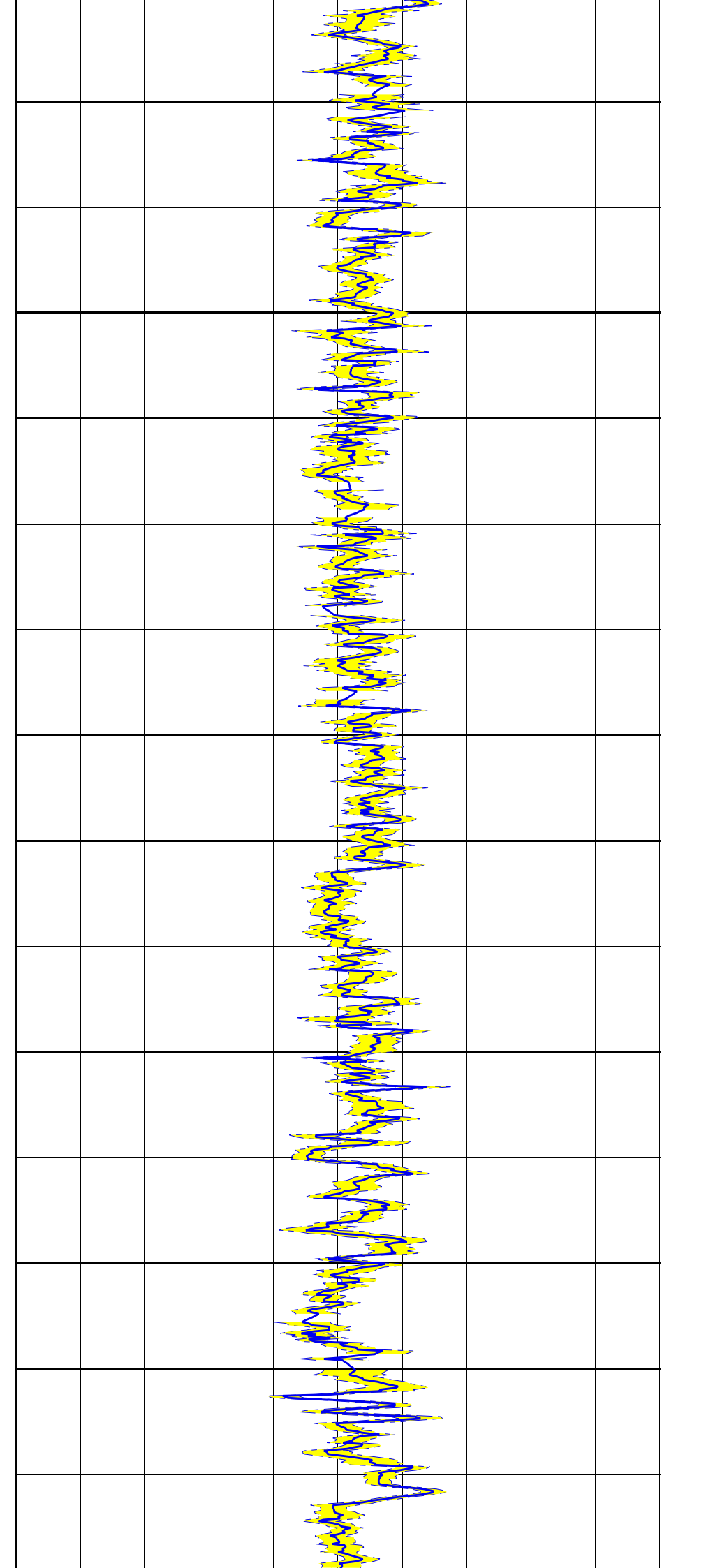
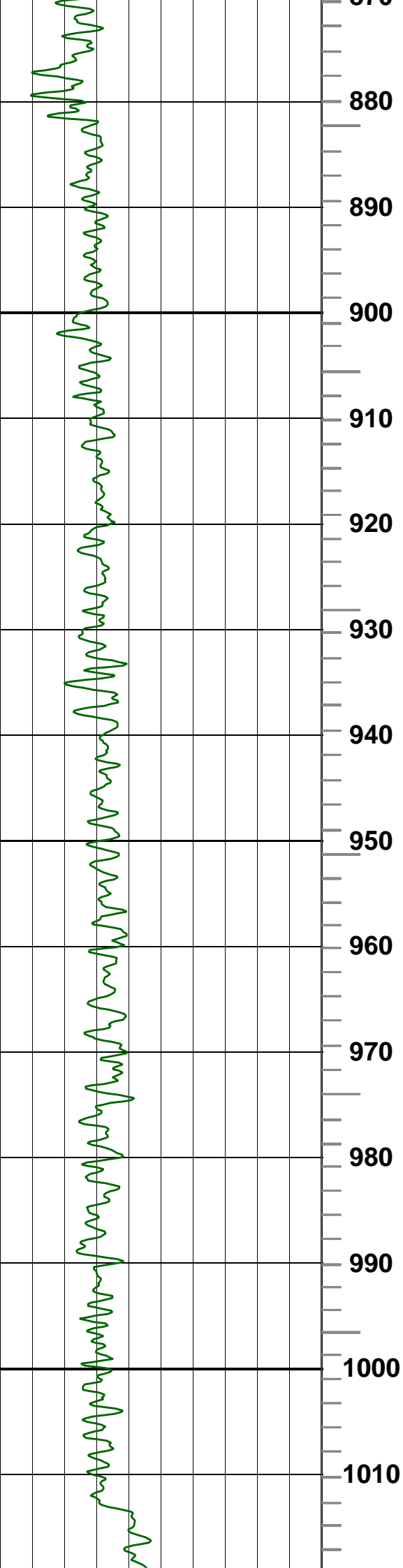
ITT PIP - Small : 1ms ; Large : 10ms

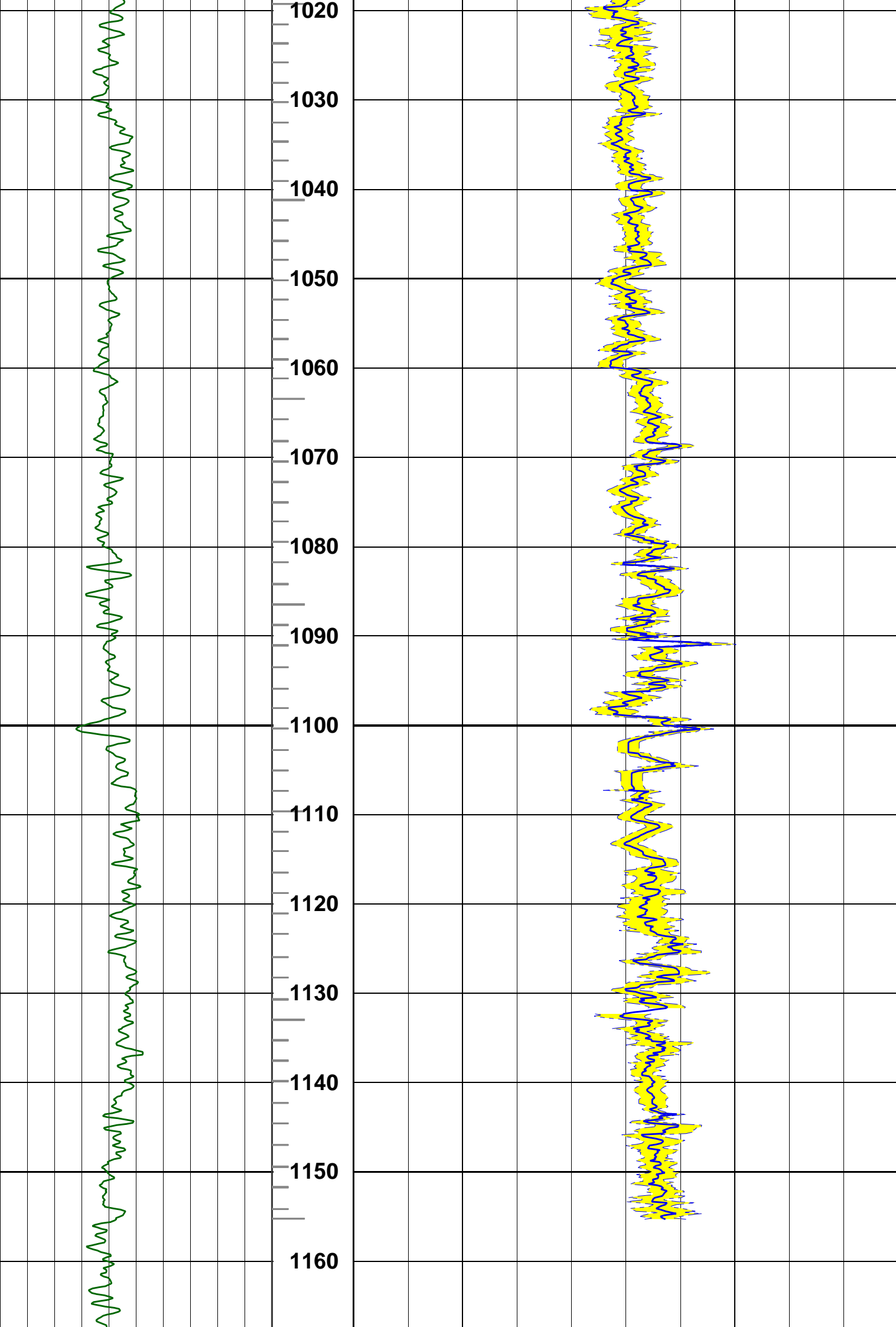


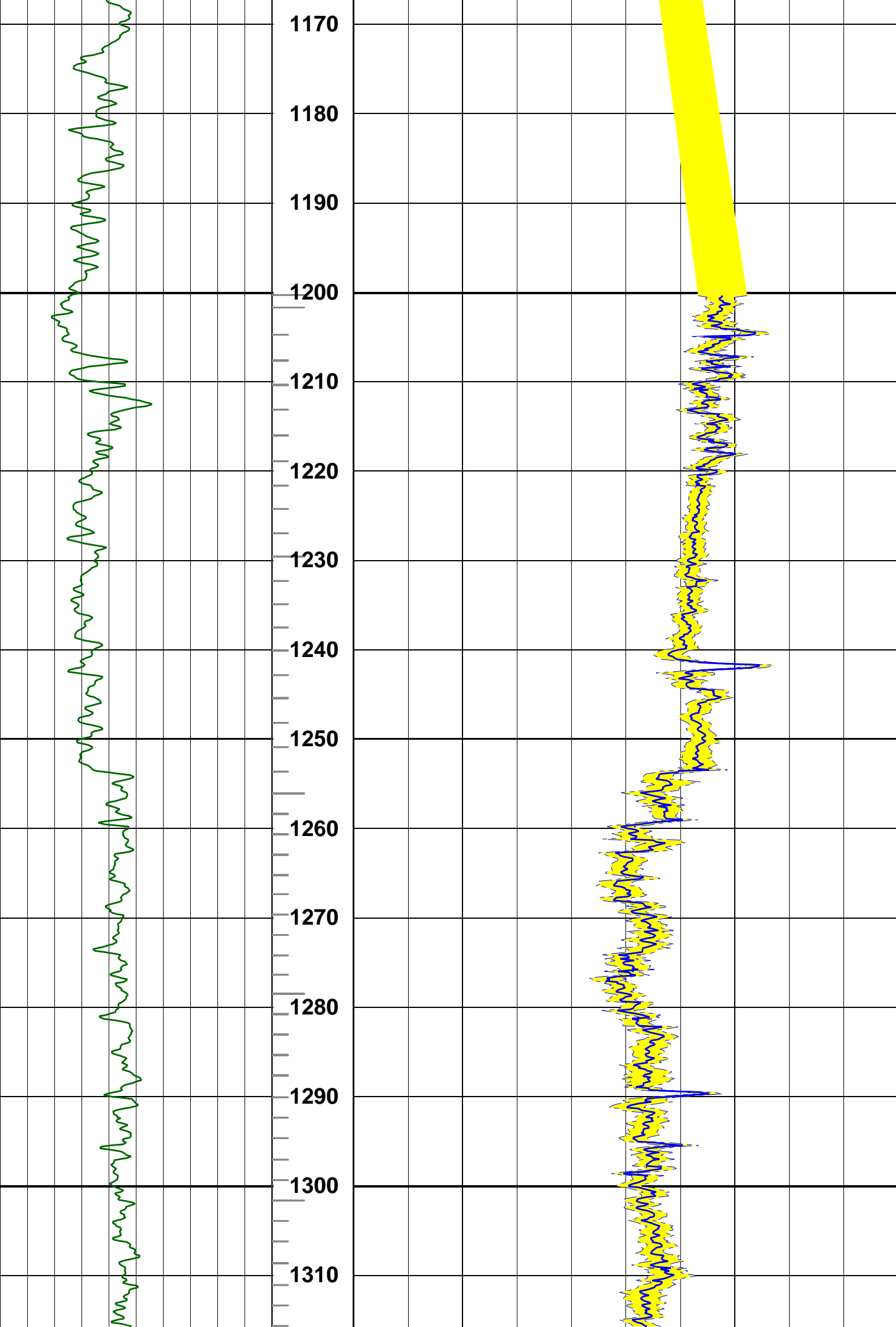


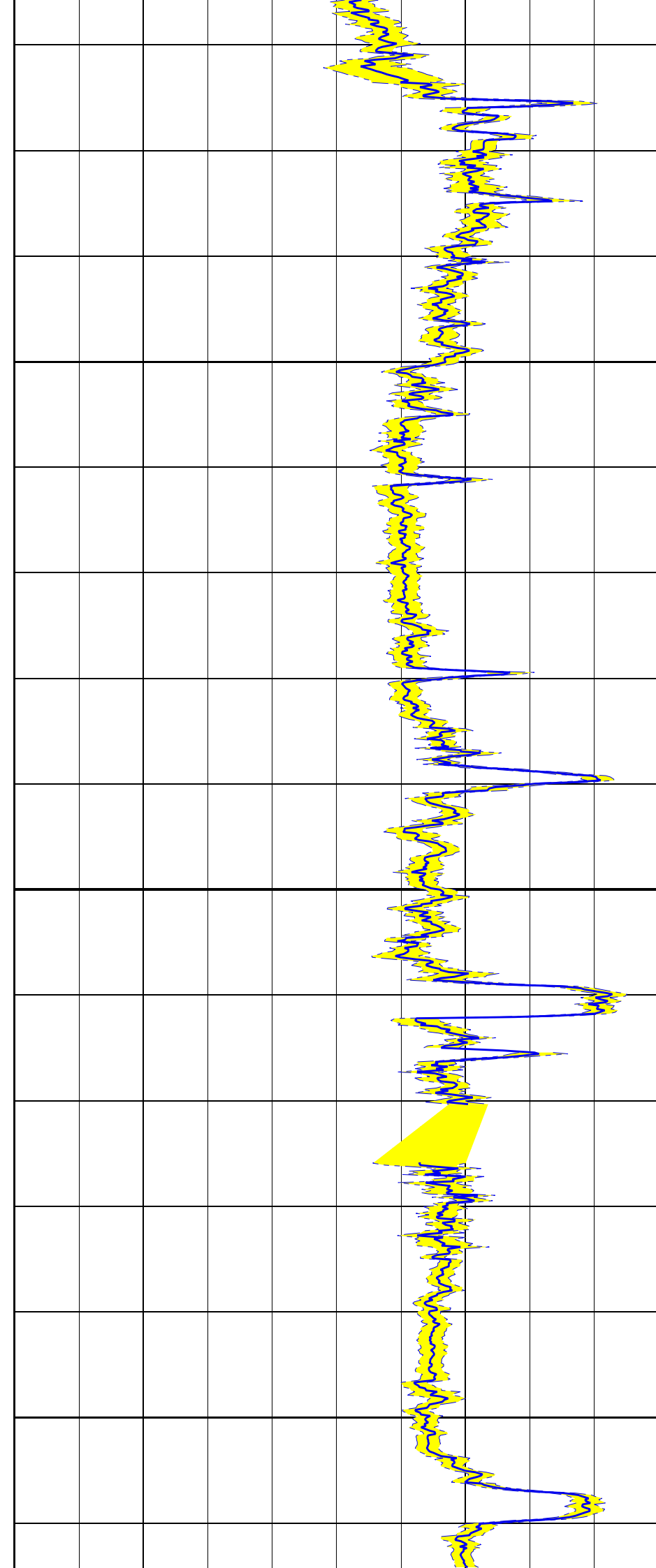
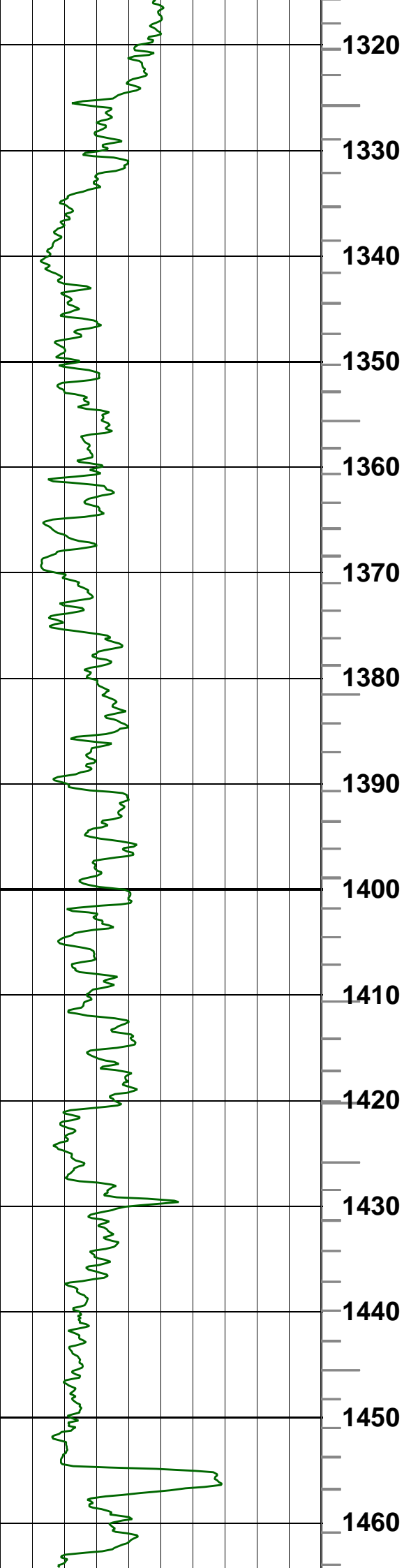


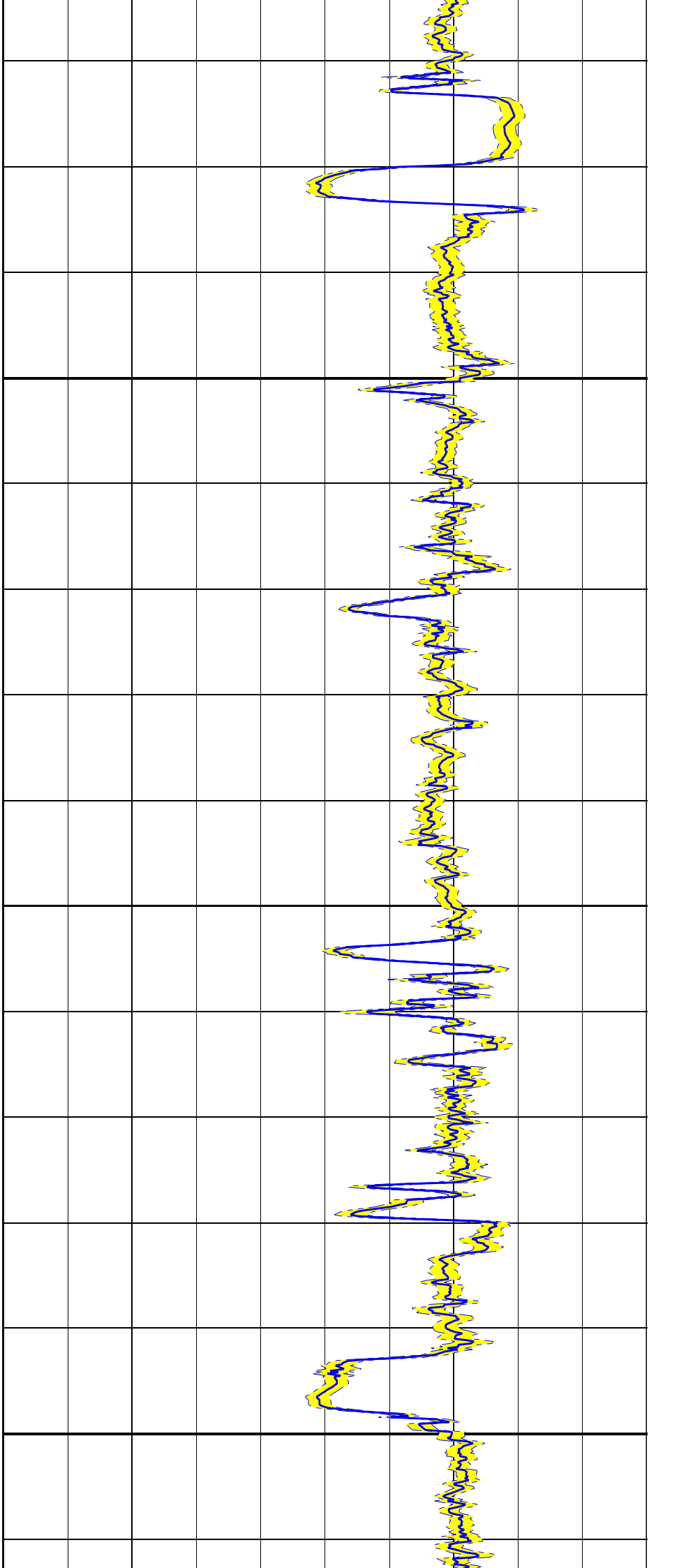
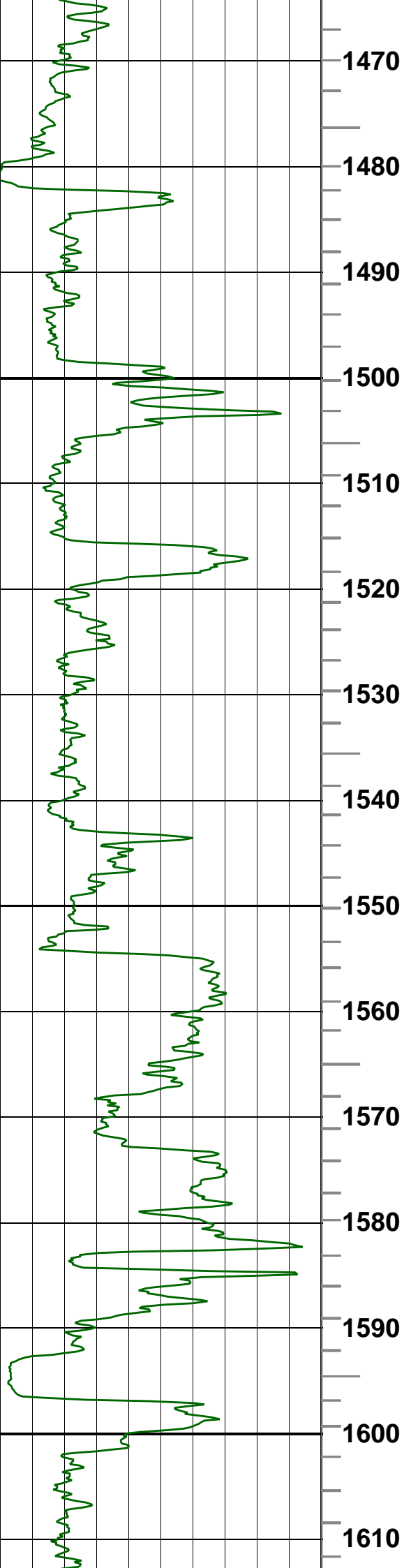


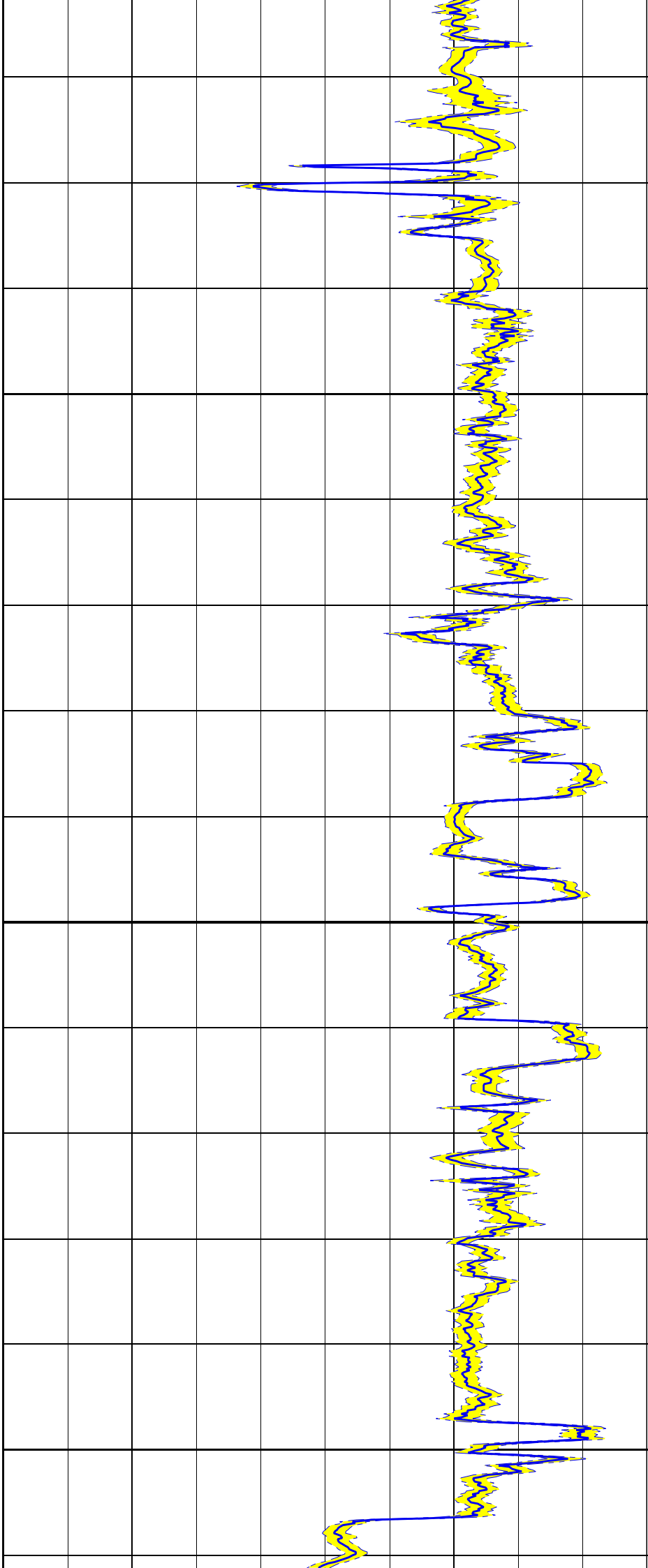
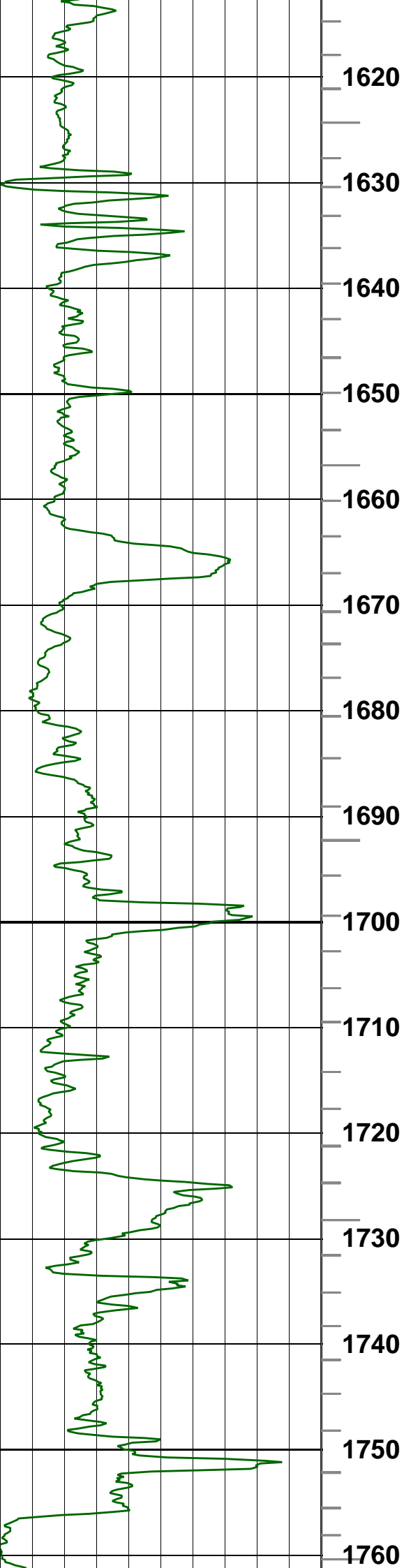


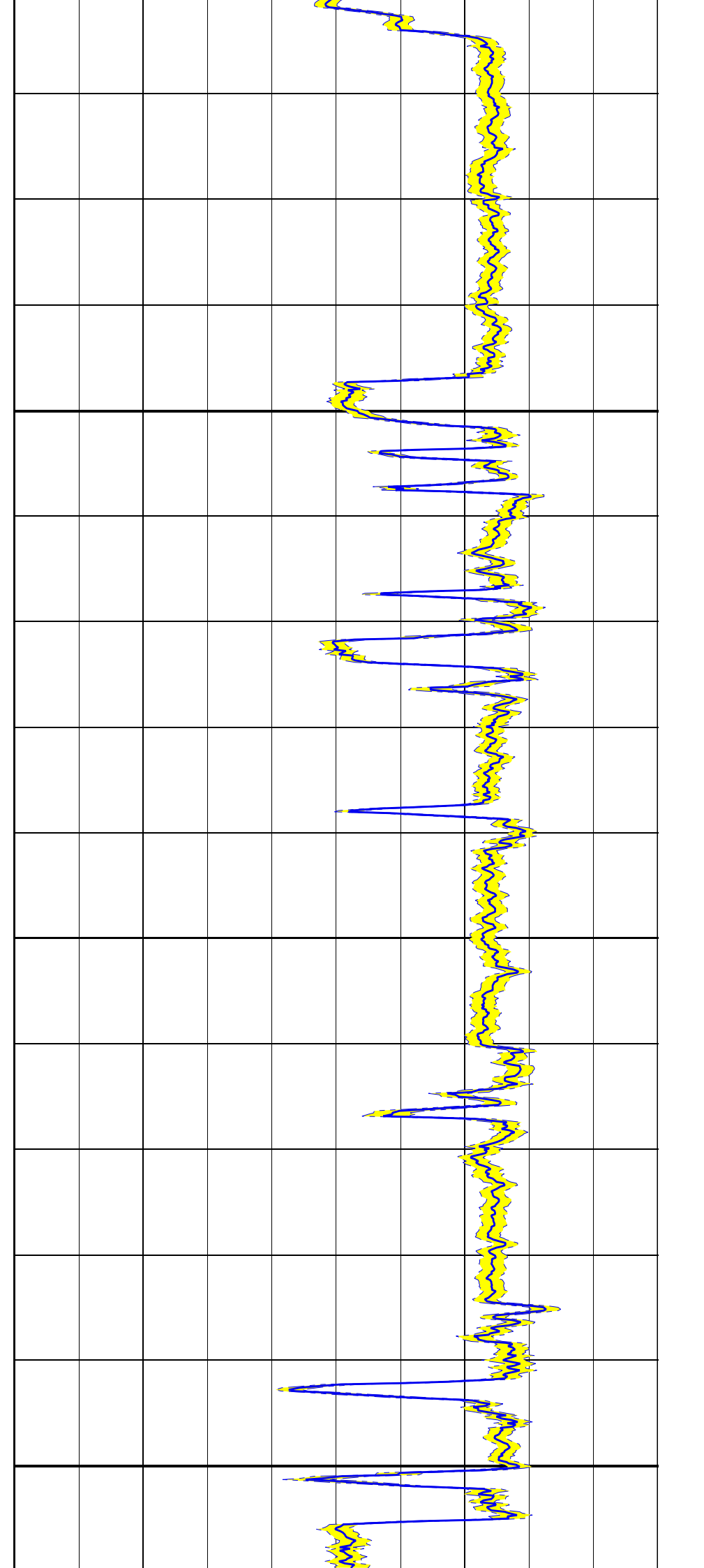
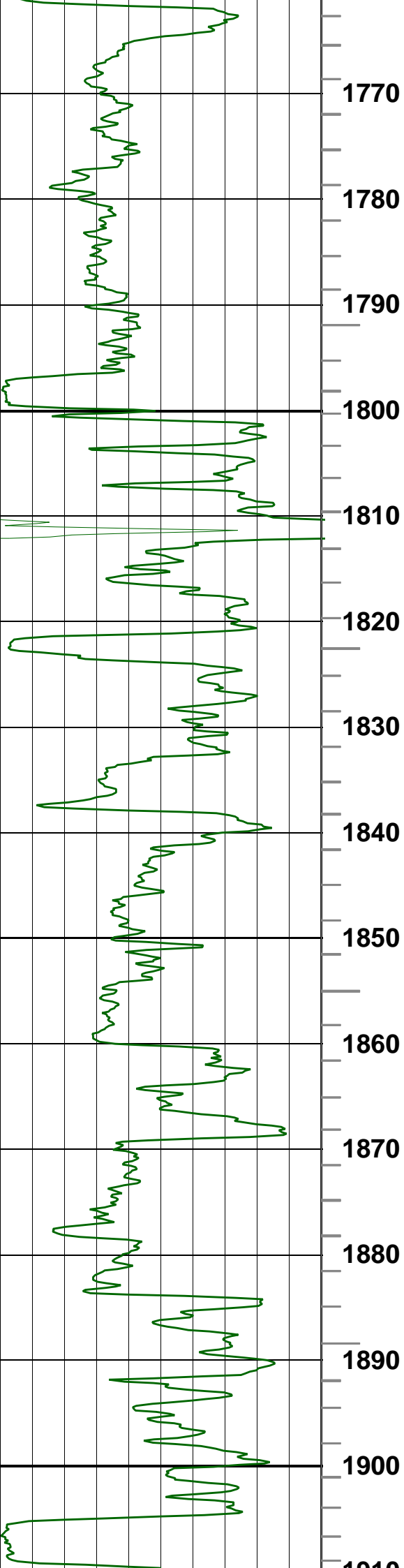


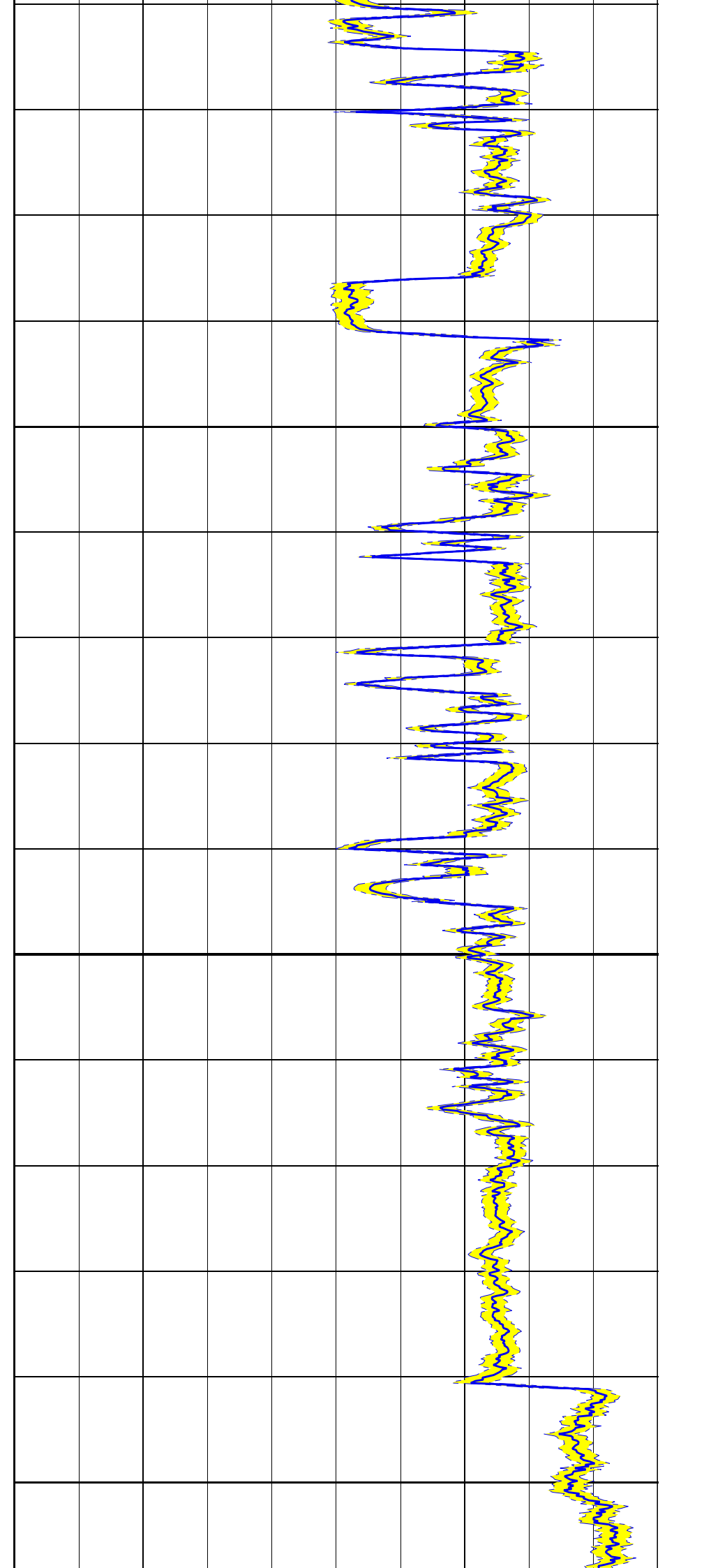
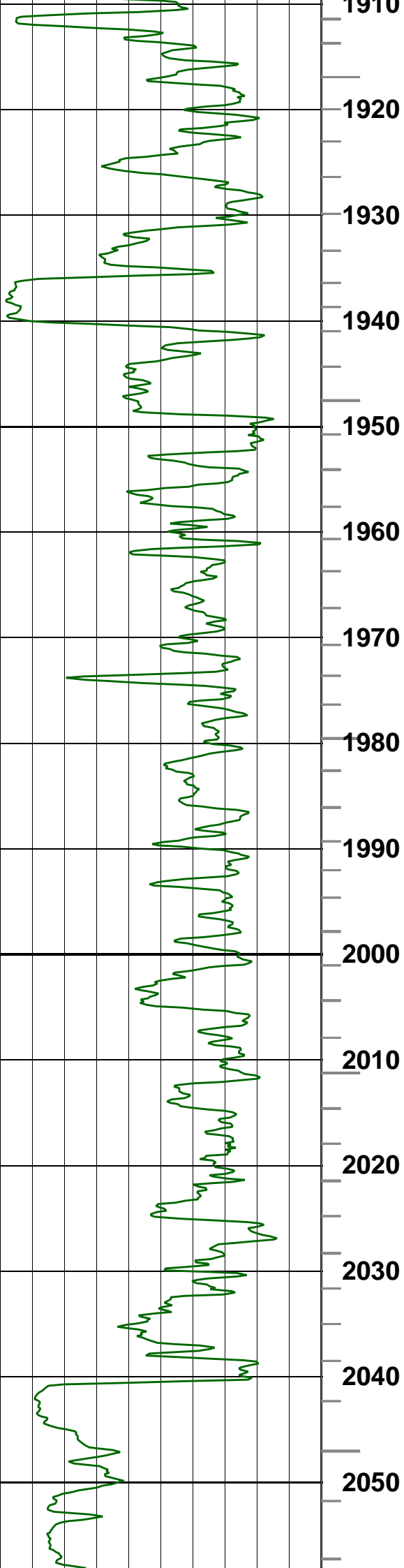


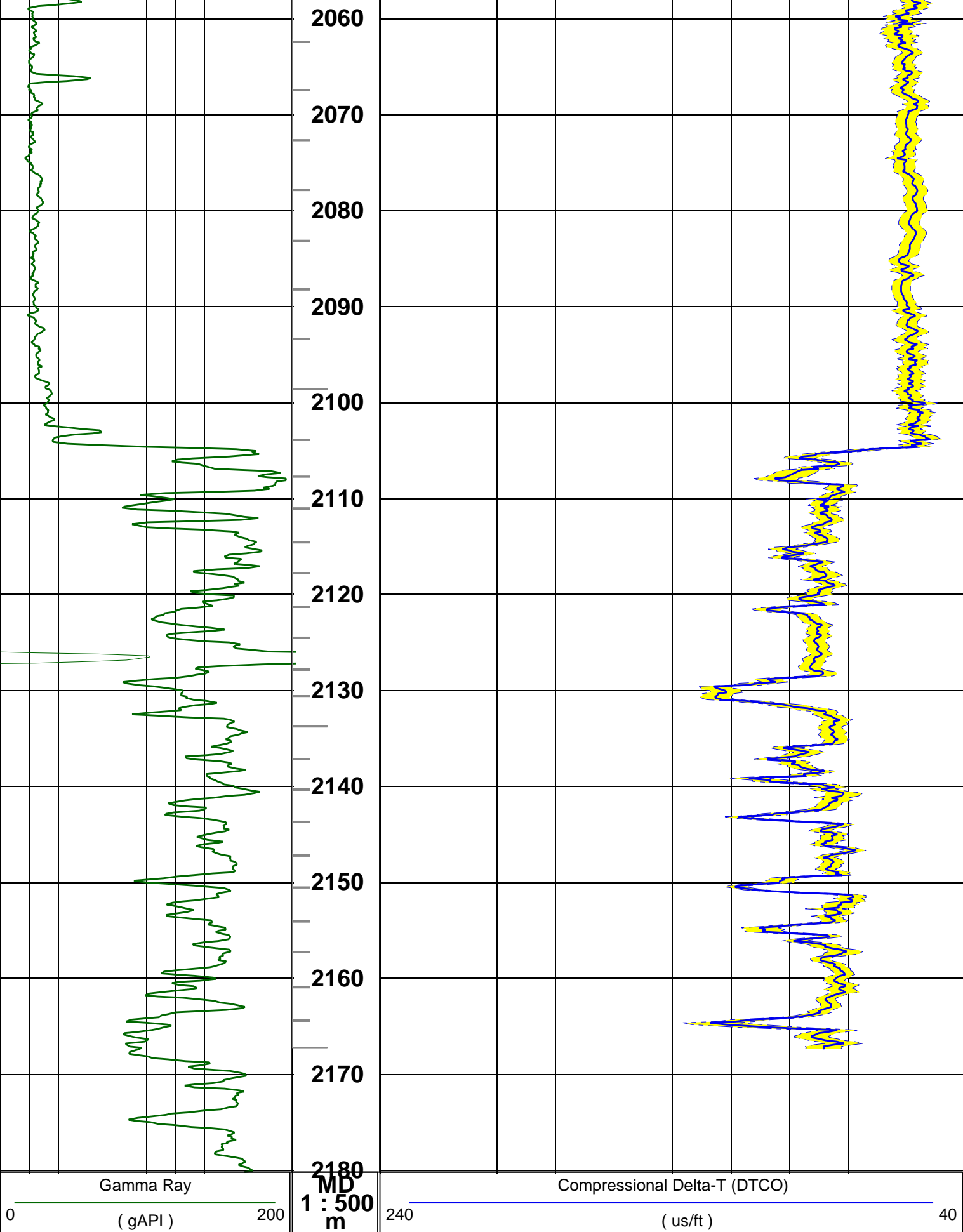












ITT PIP
ITT PIP
0 () 5

Company: BEACH PETROLEUM
Well: PEEJAY-1
FIELD: WILDCAT
RIG: WEST TRITON
STATE: TASMANIA



Date Processed: 28-Nov-2008

Well Location: BASS STRAIT

Elevations: KB: 34.15m GL: -78m
API Number: 08ASQ0031